



APPENDIX 24-1

PHOTOGRAPHIC RECORDS

Appendix 24-1 Photographic Record

Proposed Sceirde Rocks
Offshore Wind Farm –
Onshore Elements



24. Photographic Record of Site

24.1 Proposed Onshore Landfall Location (OLL)



Plate 1: Approach to proposed Onshore Landfall Location from south, looking NW.



Plate 2: Proposed Temporary Construction compound, looking SW.

24.2 **Proposed Onshore Grid Connection (OGC) – Onshore Landfall Location to OCC**

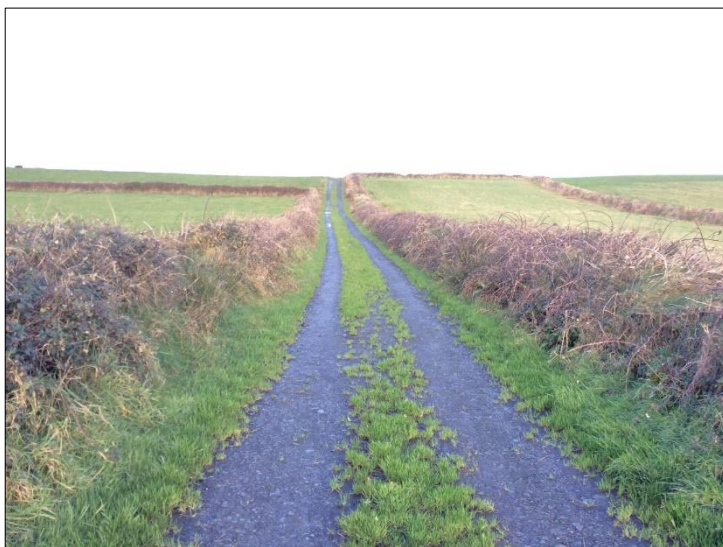


Plate 3: Proposed Onshore Grid Connection route along existing track to south of proposed Onshore Landfall Location (Killard Td.), looking NW.



Plate 4: Proposed OGC route further to south (Killard Td.), looking NW.



Plate 5: Proposed OGC route through pasture (Killard Td.), looking SE.



Plate 6: Proposed OGC route in pasture further to SE, looking SE.



Plate 7: Proposed OGC in pasture looking SW.



Plate 8: Proposed OGC route along existing track and in pasture (Doonmore Td.), looking NW.



Plate 9: Proposed OGC route on public road Doonmore Td., looking SE.



Plate 10: Proposed OGC route further to SE in Doonmore Td., looking NW.



Plate 11: Proposed OGC route further to SE in Carrowmore South Td., looking NW.



Plate 12: CH2 on proposed OGC at Moanmore Upper/Moanmore North Tds.



Plate 13: CH4 on proposed OGC route at Moanmore Lower/Moanmore South Tds.



Plate 14: Proposed OGC route at Carnaun/Durha Tds. And vicinity of CH5, looking NE.



Plate 15: CH6 adjacent to proposed OGC route at Durha Td.



Plate 16: Proposed OGC route in pasture at Durha Td., looking SE.



Plate 17: Ringfort CL057-040— to west of proposed OGC, looking NW.



Plate 18: Proposed OGC route to east of Ringfort CL057-040—, looking NW.



Plate 19: Proposed OGC route through pasture at Durha and Ballykett Tds., looking E.



Plate 20: Proposed OGC route in Kilrush Golf Course, looking NE.



Plate 21: Proposed OGC route in Kilrush Golf Course, looking SE.



Plate 22: Proposed OGC route further to SE in Kilrush Golf Course, looking NW.



Plate 23: Proposed OGC route further to south in Kilrush Golf Course, looking NE.



Plate 24: Location of CL057-062—Redundant record to W of proposed OGC route, looking WSW.



Plate 25: CH2 on proposed OGC route (Parknamoney/Kilcarroll Tds.), looking SE.



Plate 26: Proposed OGC route at Feagarroge/Kilcarroll/Dysert Tds., looking NW.



Plate 27: Proposed OGC route, Dysert Td., looking S.

24.3 Proposed Onshore Compensation Compound (OCC)



Plate 28: North side of proposed OCC, looking W.



Plate 29: North-west side of proposed OCC, looking W.



Plate 30: Proposed OCC, looking SE.



Plate 31: West side of proposed OCC, looking N.

24.4 **Proposed Onshore Grid Connection (OGC) – OCC to Moneypoint 220kV Substation**



Plate 32: Proposed OGC route to south of proposed OCC, looking SE.



Plate 33: Proposed OGC route at Ballymacrinan and Carrowdotia North Tds., looking SE.



Plate 34: Proposed OGC route at Carrowdulia North Td., looking SW.